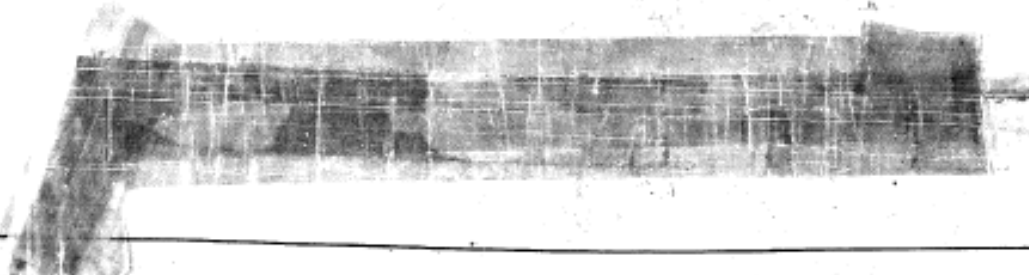
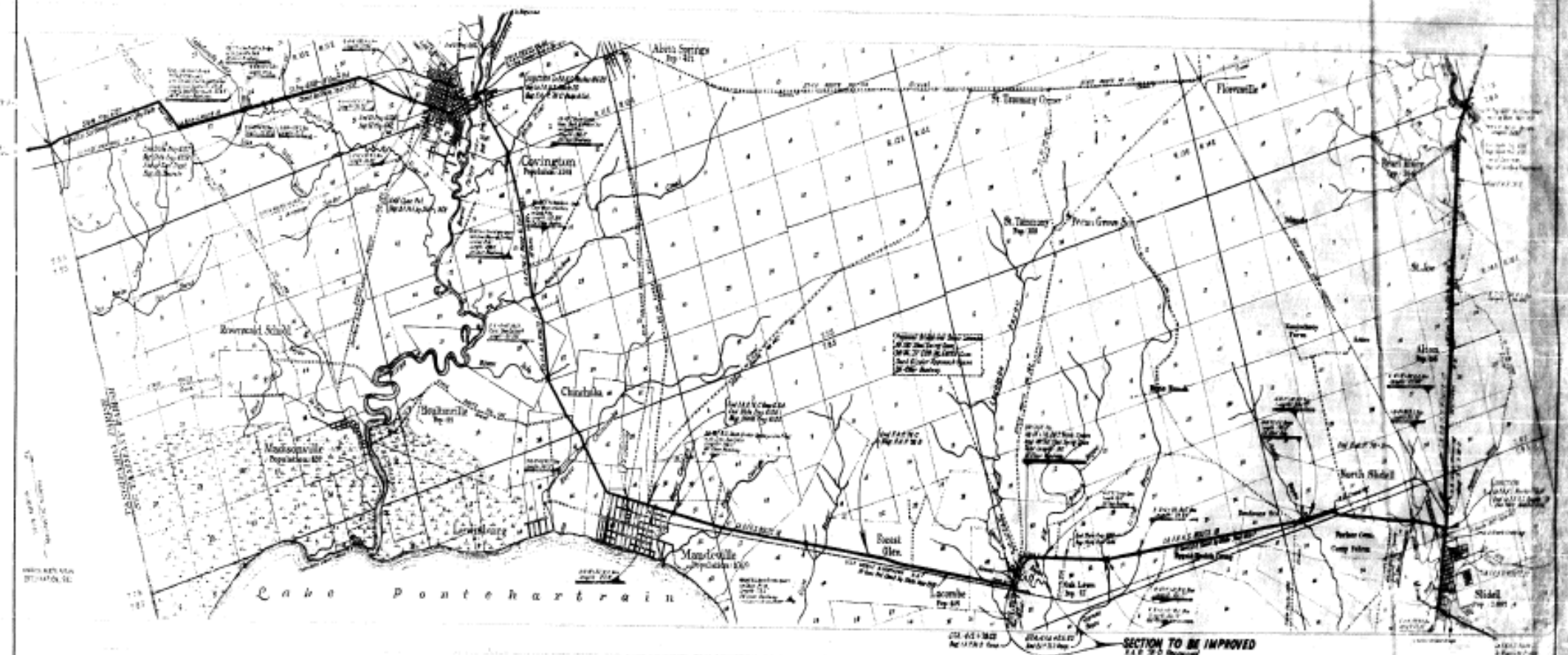


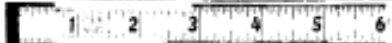


2

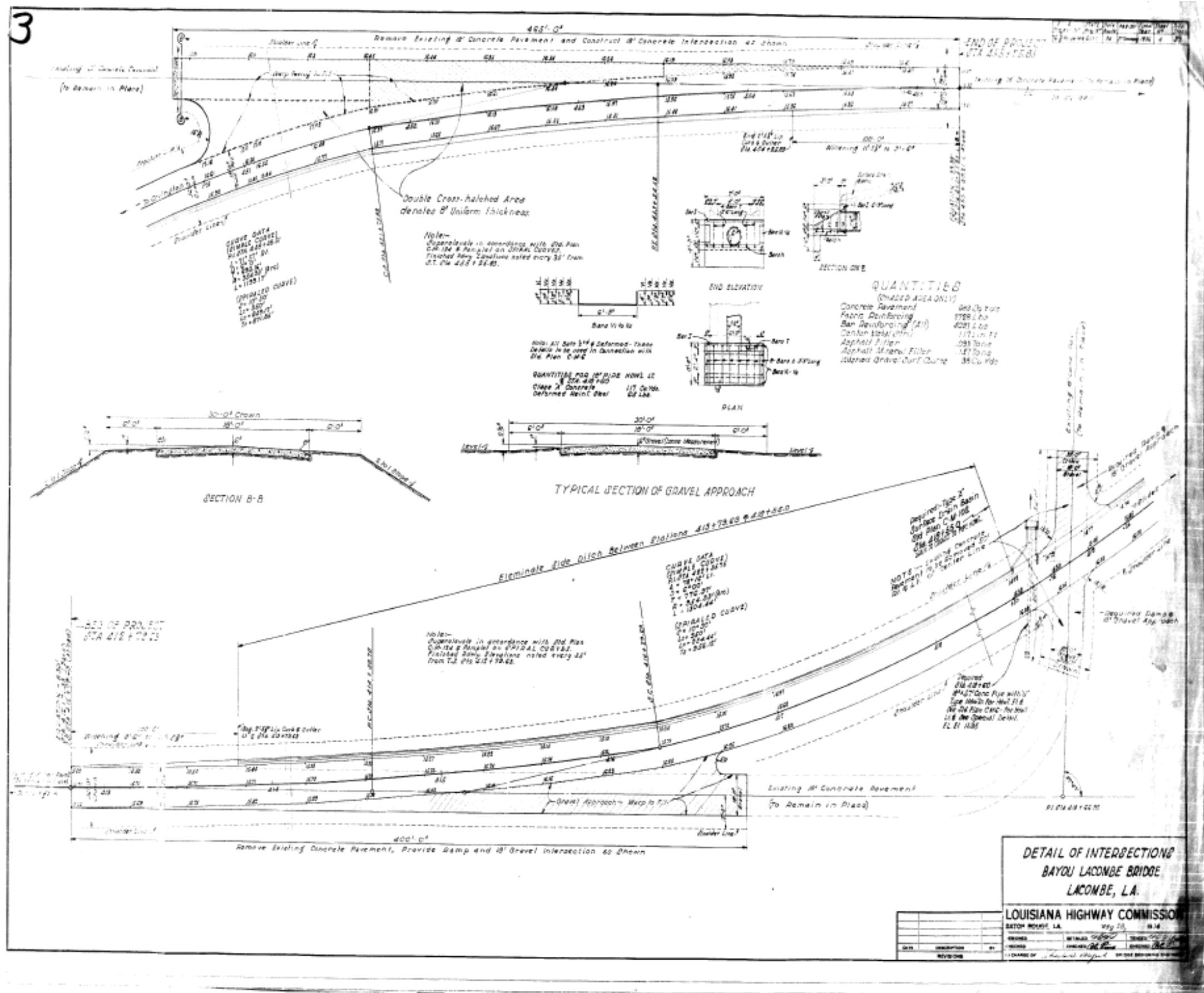
Project	Sheet	Part	Scale	Date
COVINGTON-SLIDELL PEARL RIVER HWY	211	1	1" = 1/2 MI.	1937



**LAYOUT MAP**  
**COVINGTON-SLIDELL**  
**PEARL RIVER HWY**  
**BAYOU LA COMBE BRIDGE**  
**ST TAMMANY PARISH**



FINAL TRACINGS



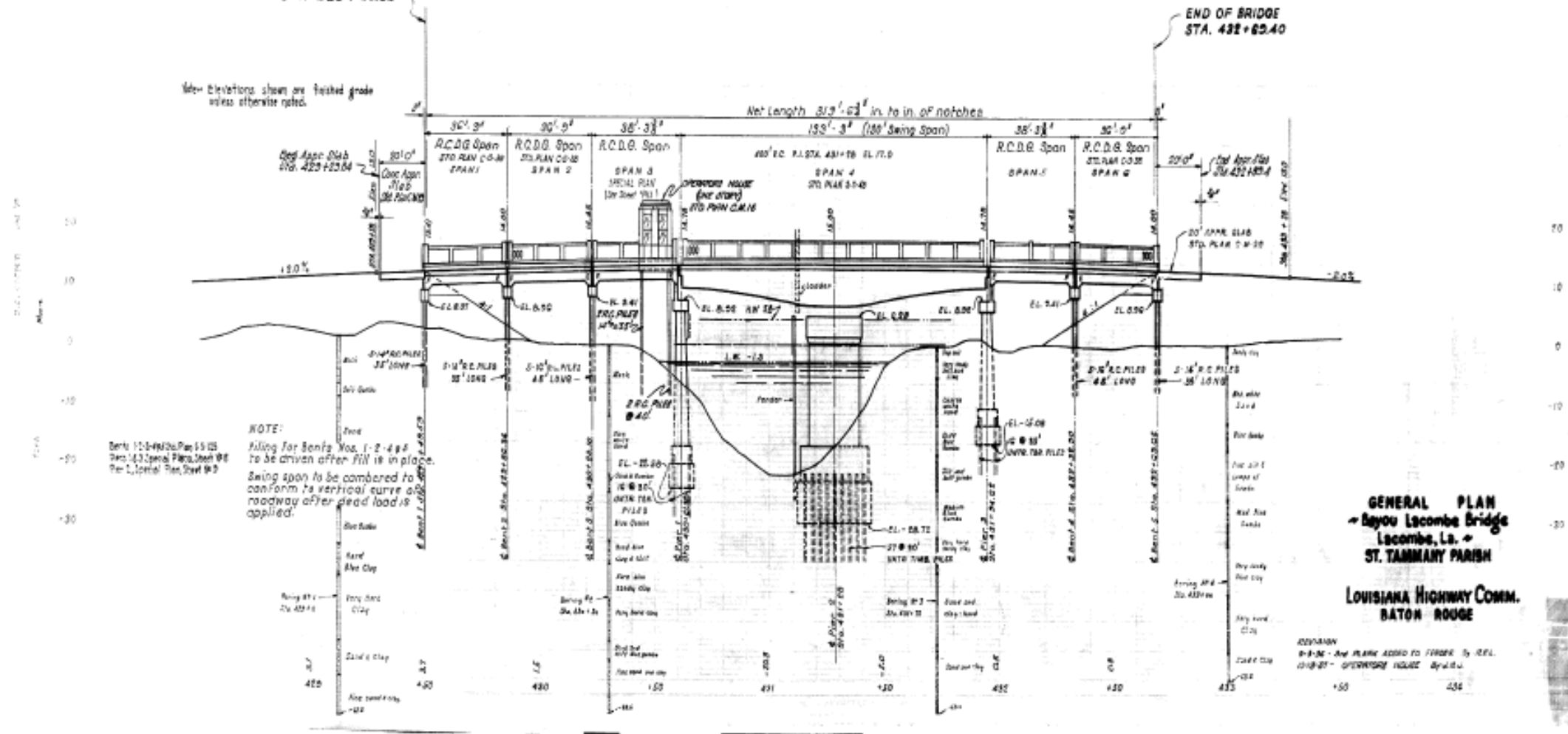
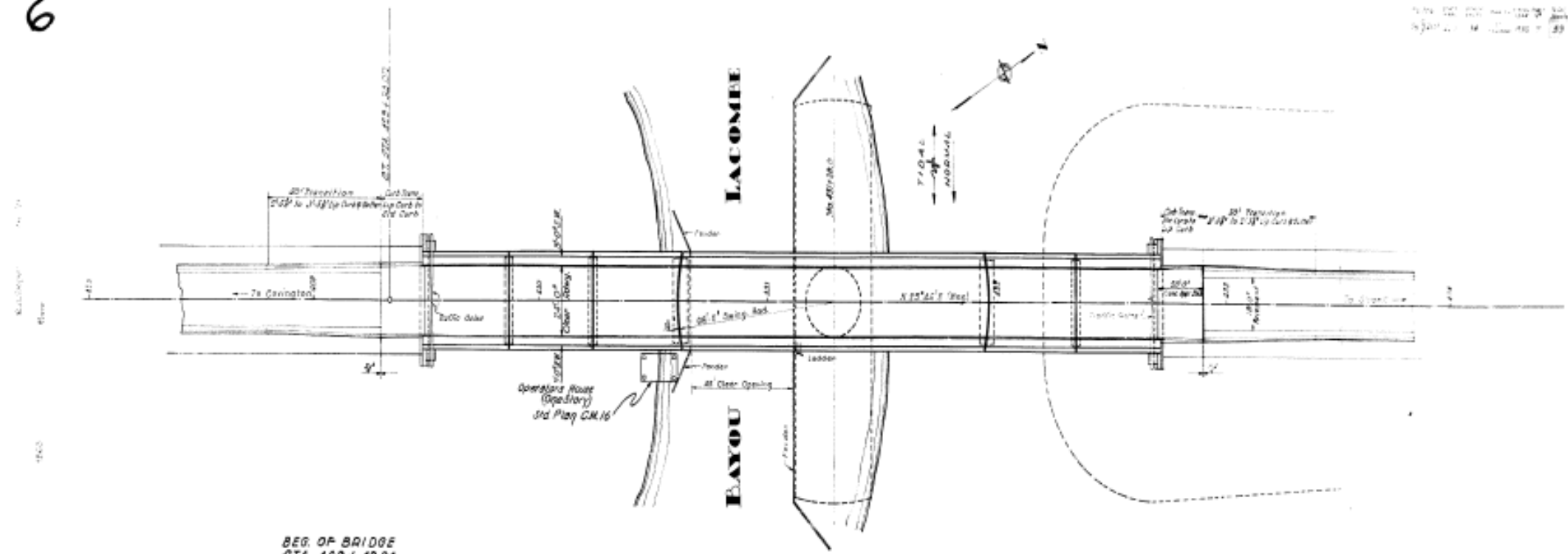
FINAL TRACINGS







6



Note: Elevations shown are finished grade unless otherwise noted.

NOTE:  
 Piling for Bents Nos. 1-2-4-6 to be driven after FILL is in place.  
 Swing span to be cambered to conform to vertical curve of roadway after dead load is applied.

GENERAL PLAN  
 Bayou LaCombe Bridge  
 LaCombe, La.  
 ST. TAMMANY PARISH

LOUISIANA HIGHWAY COMM.  
 BATON ROUGE

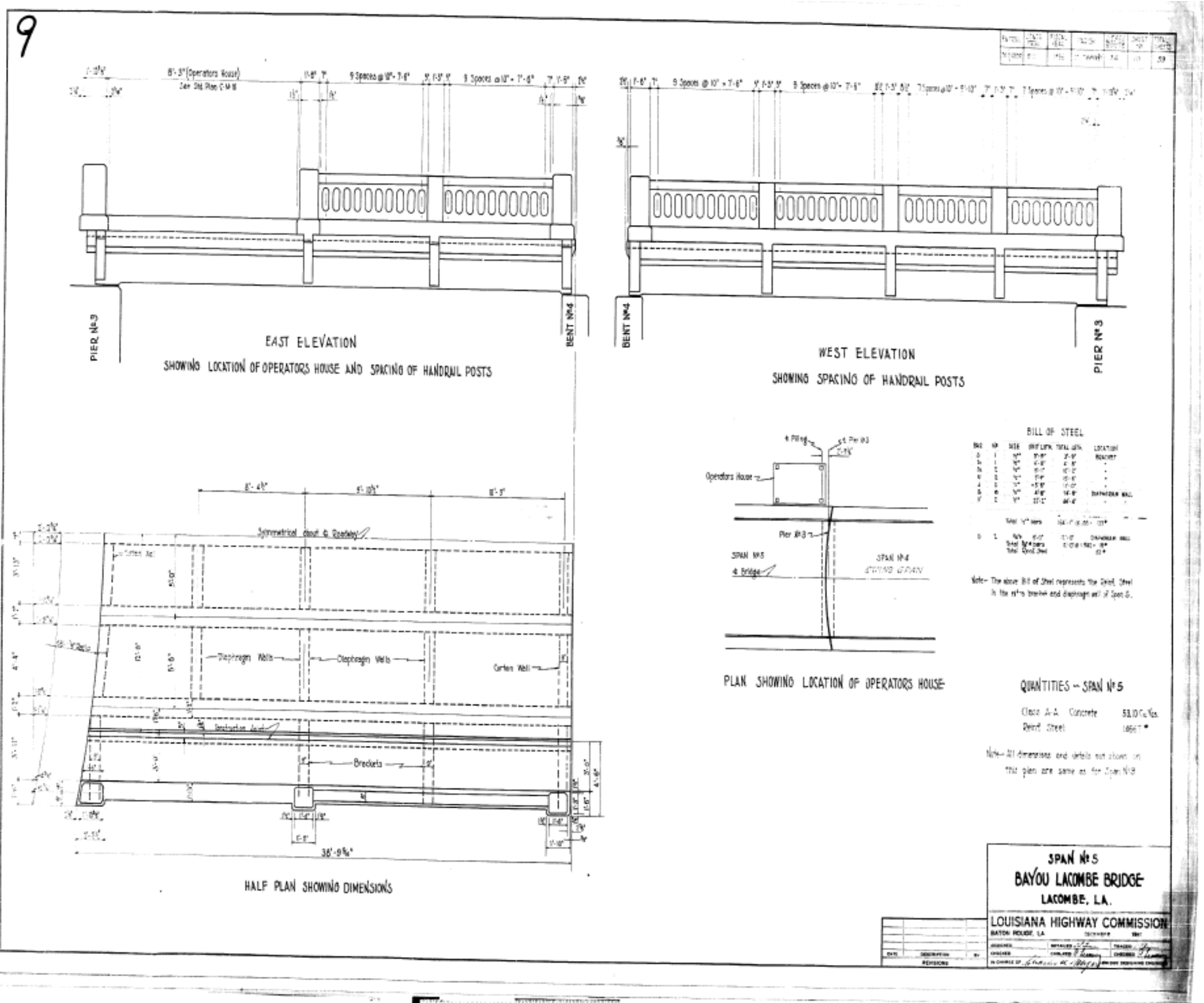
DESIGNED BY  
 8-8-36 - See Plans 4229 to 4236 by R.C.L.  
 CHECKED BY  
 8-28-36 - OVERSEER INCHES BY R.C.L.

FINAL TRACINGS





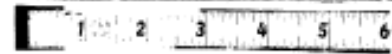
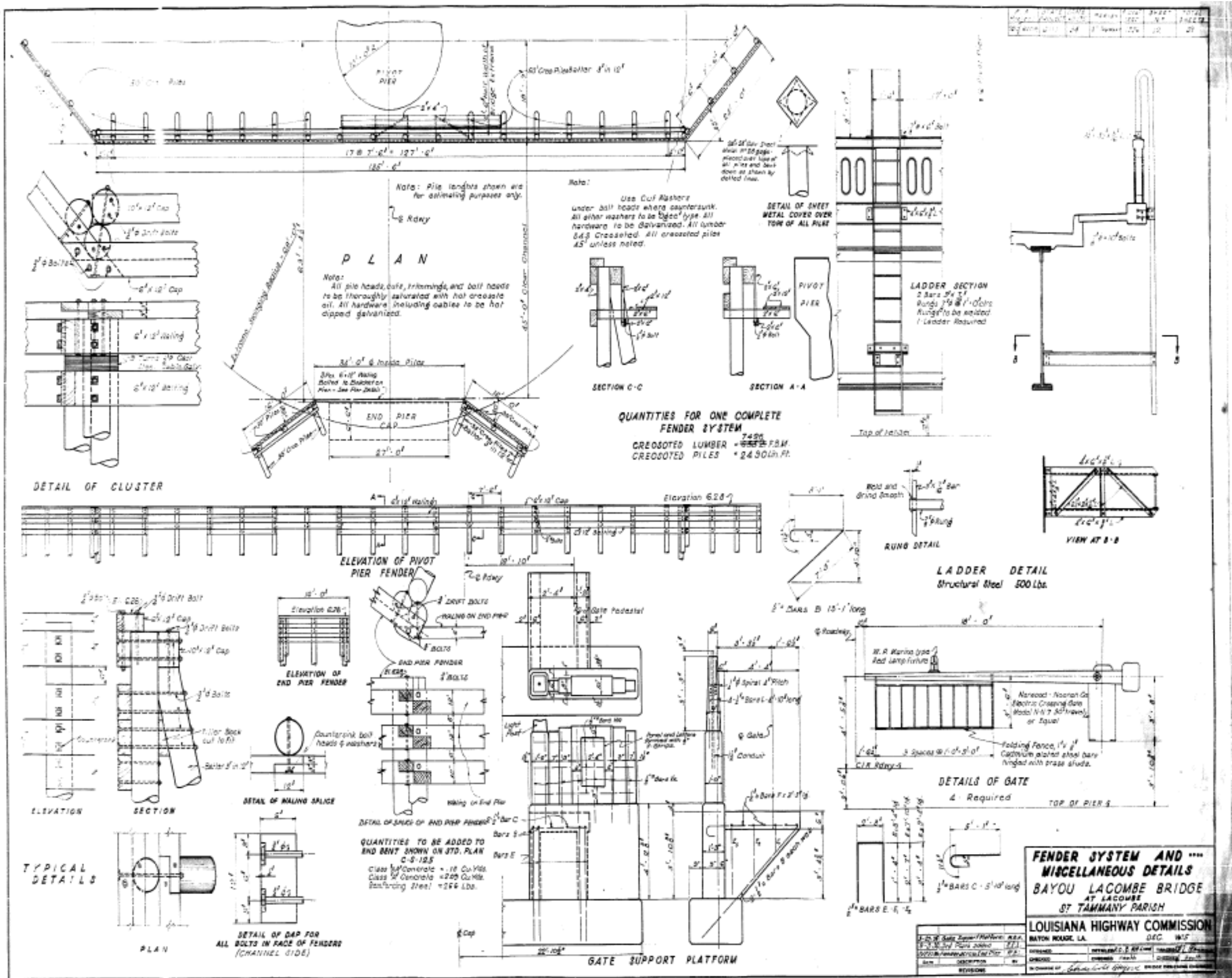




FINAL TRACINGS

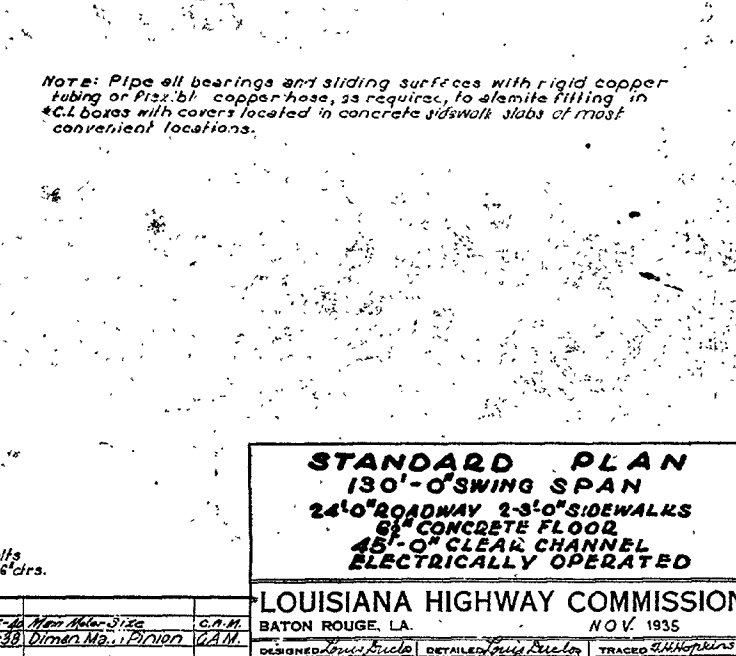
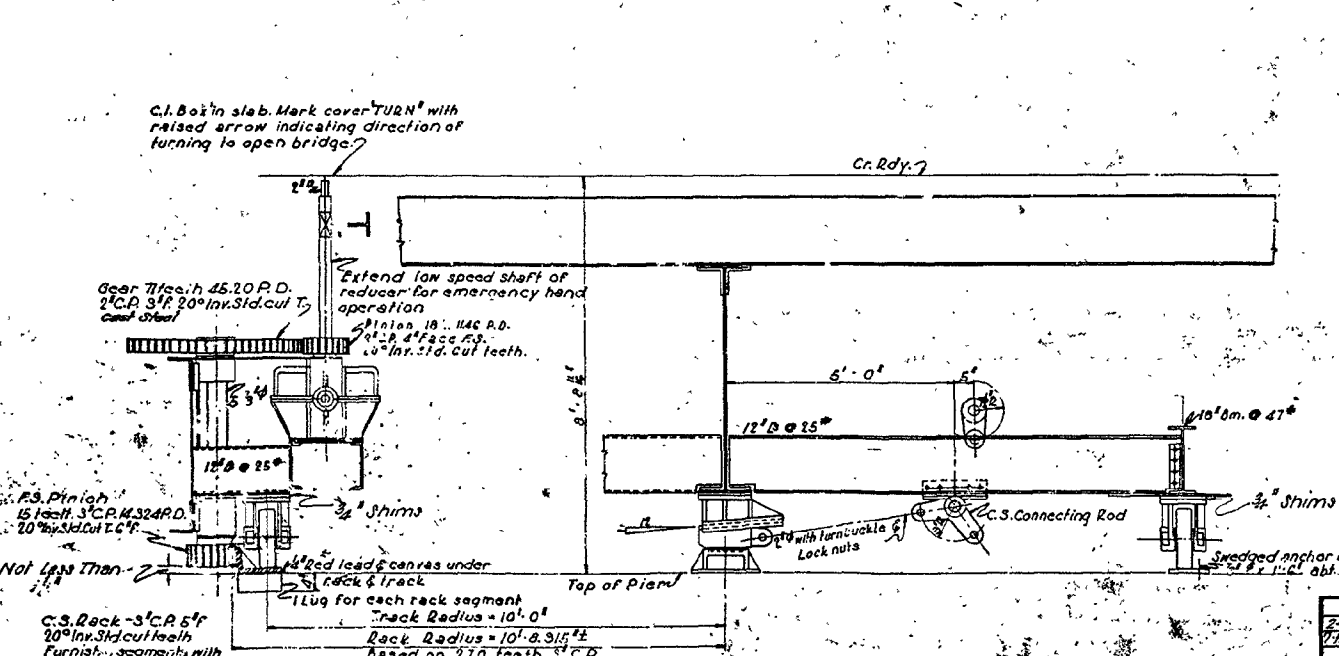
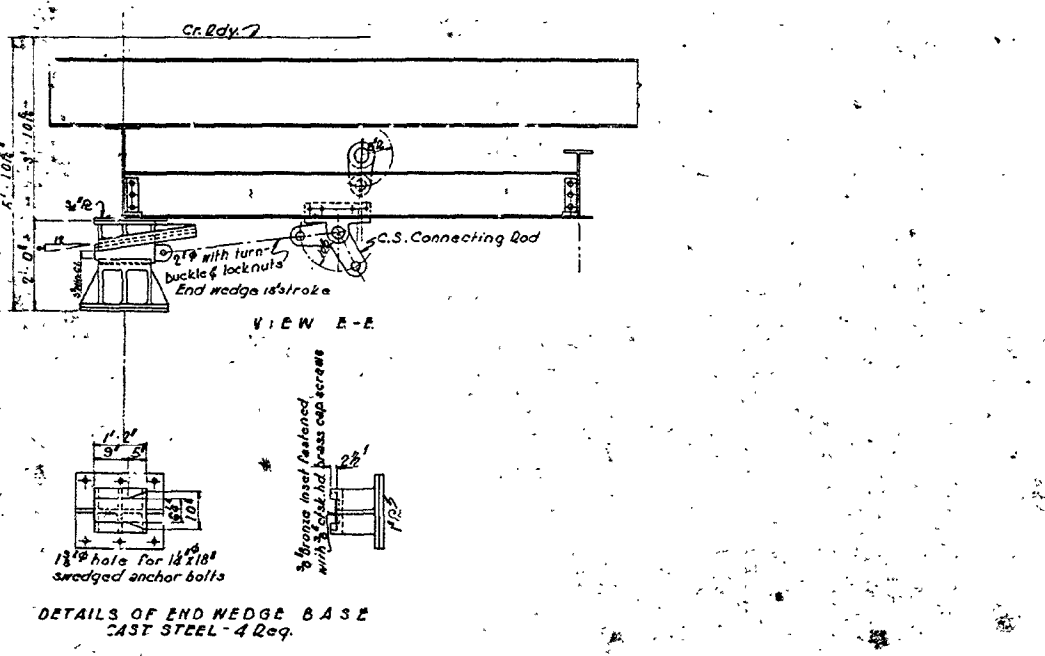
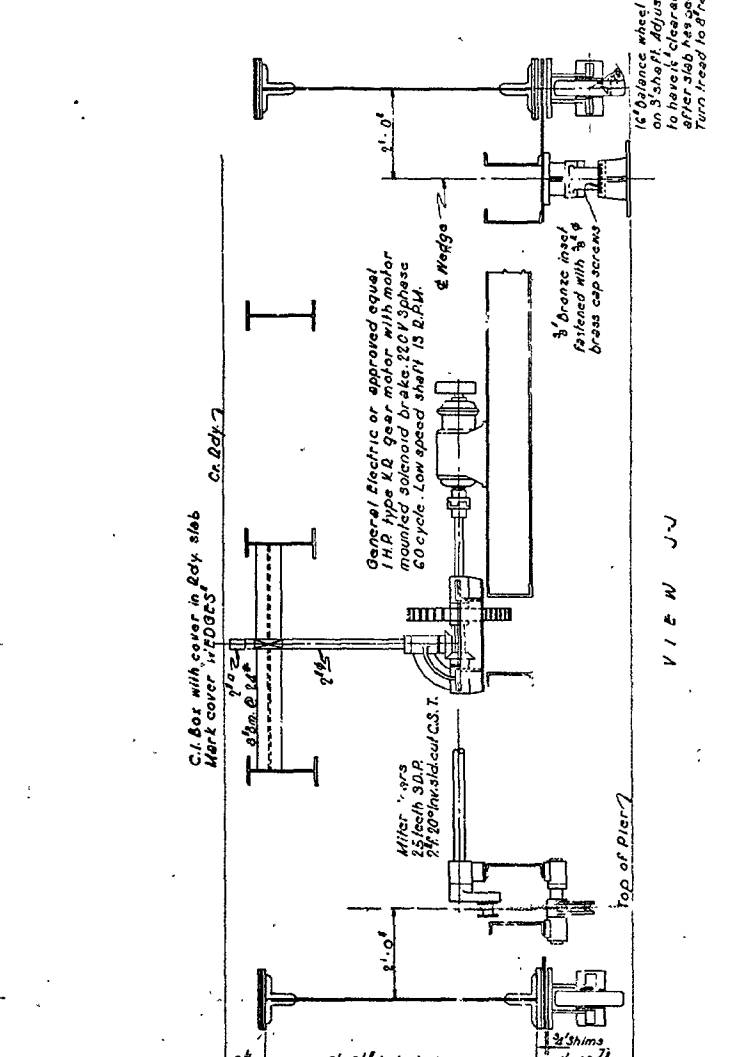
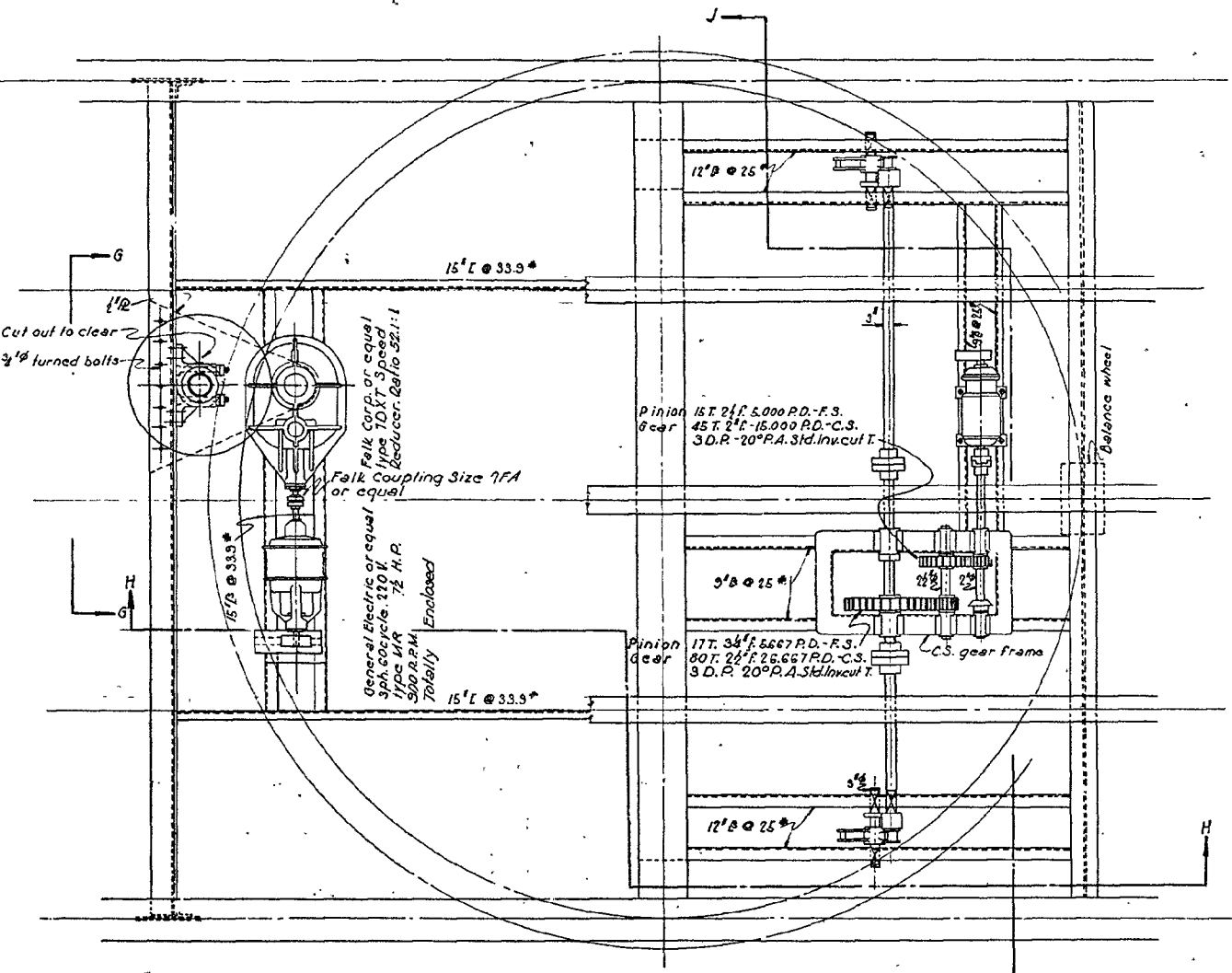
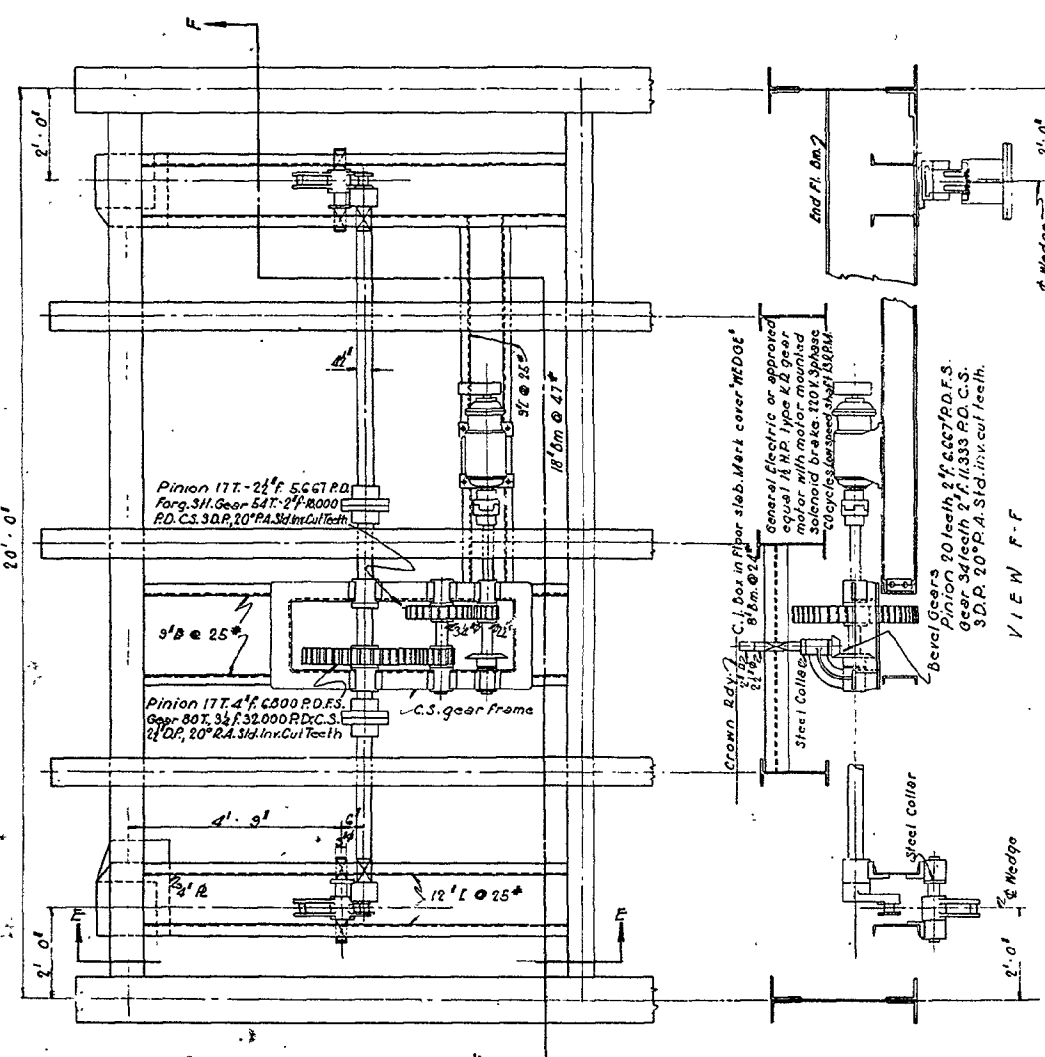






FINAL TRACINGS





Note: Pipe all bearings and sliding surfaces with rigid copper tubing or 1/2\"/>

DETAILS OF END WEDGE BASE  
CAST STEEL - 4 Req.

**STANDARD PLAN**  
**130'-0\"/>**

DESIGNED BY	DATE	BY	REVISIONS
11-15-30	11-13-30		

**LOUISIANA HIGHWAY COMMISSION**  
 BATON ROUGE, LA. NOV. 1935

DESIGNED BY	DATE	BY	REVISIONS
11-15-30	11-13-30		